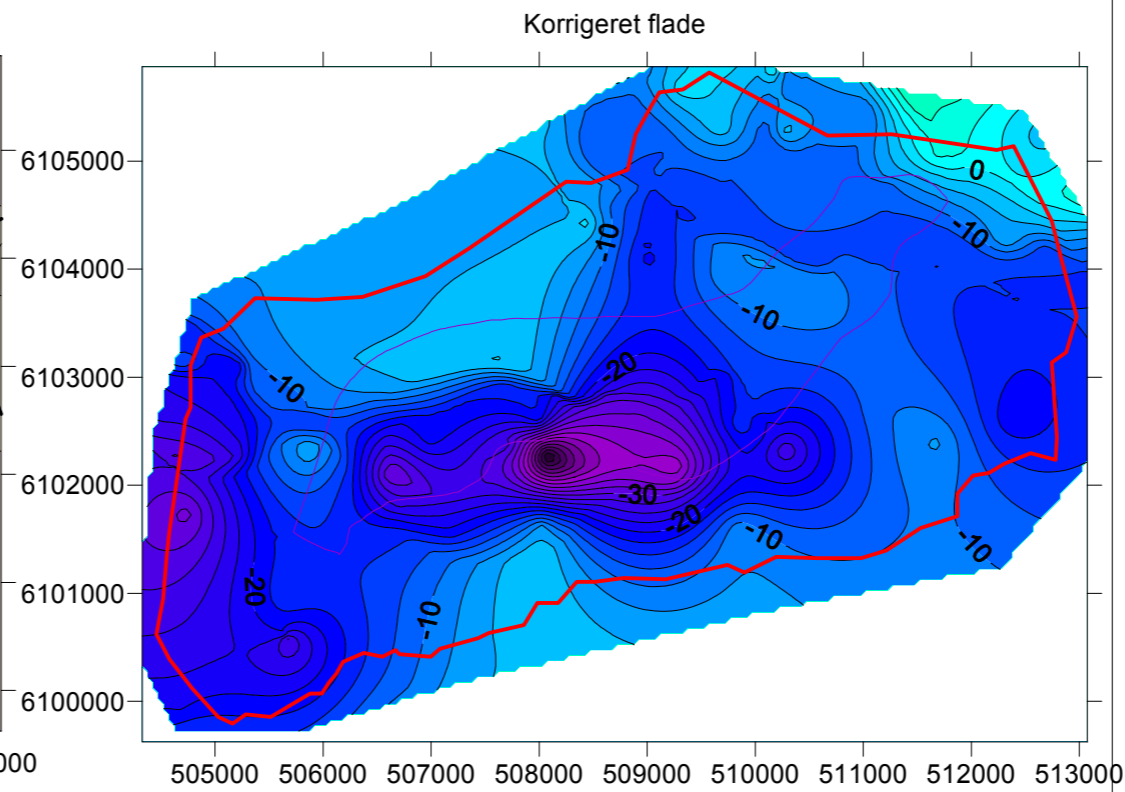
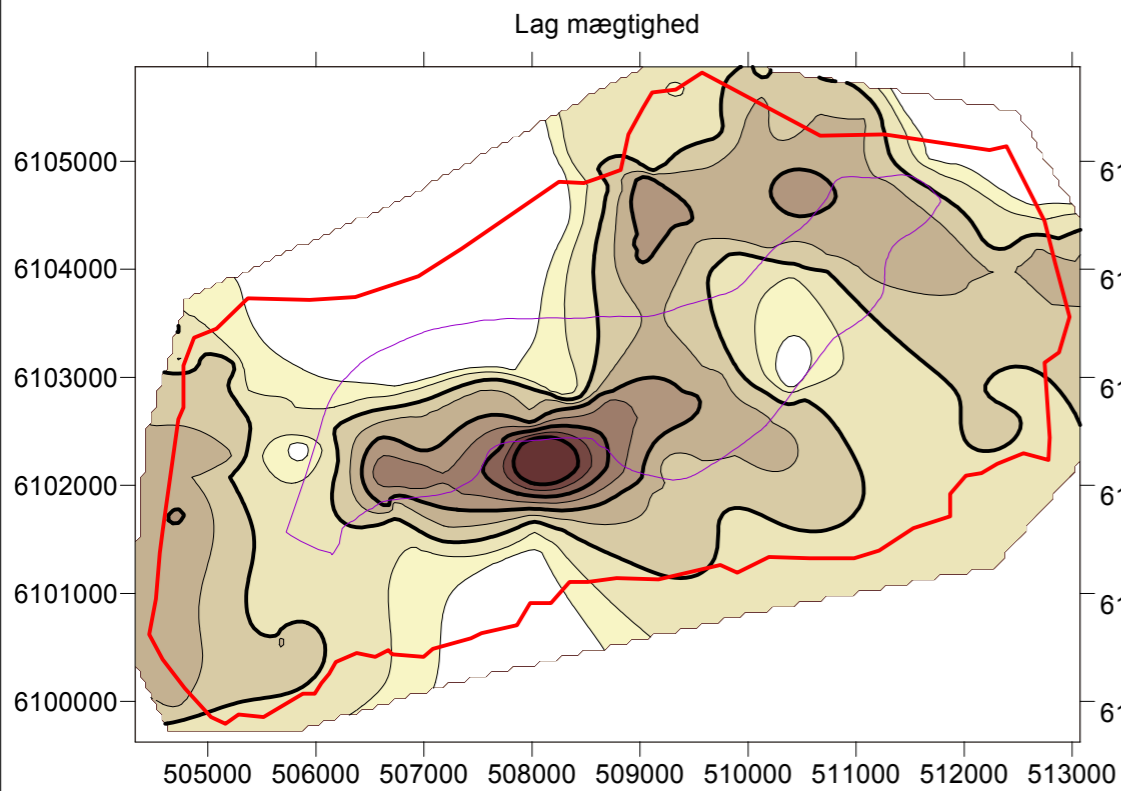
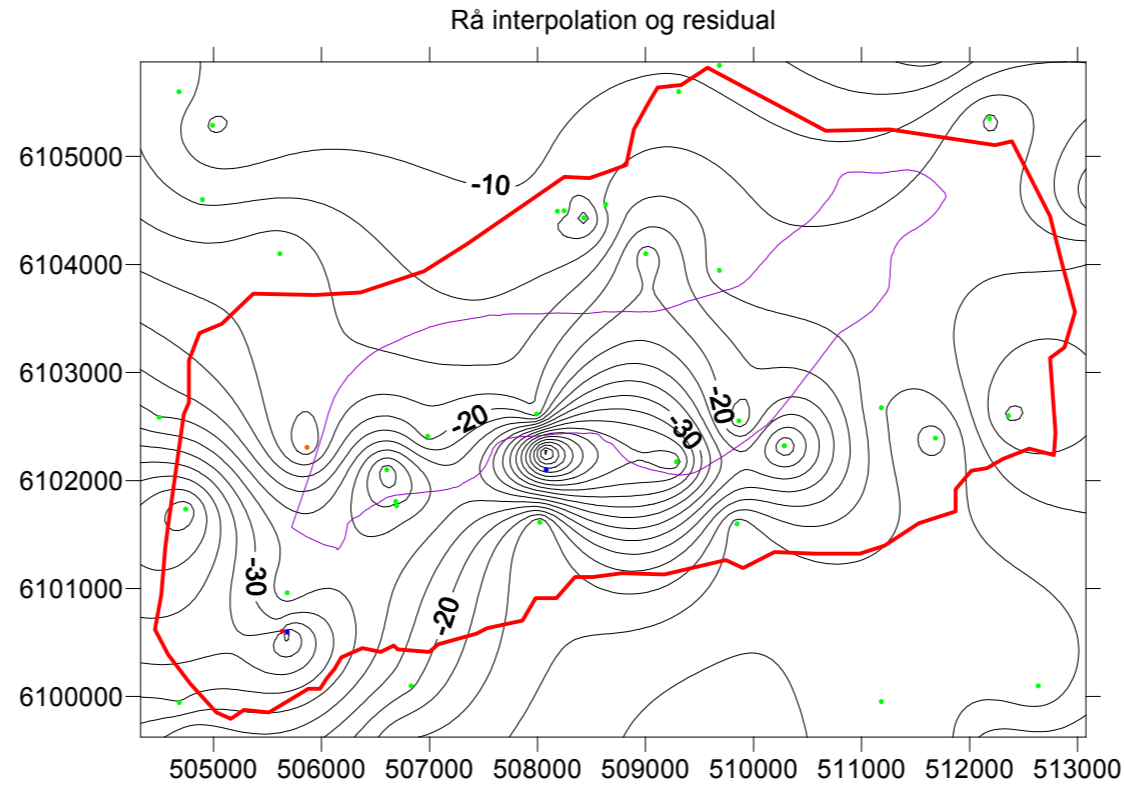
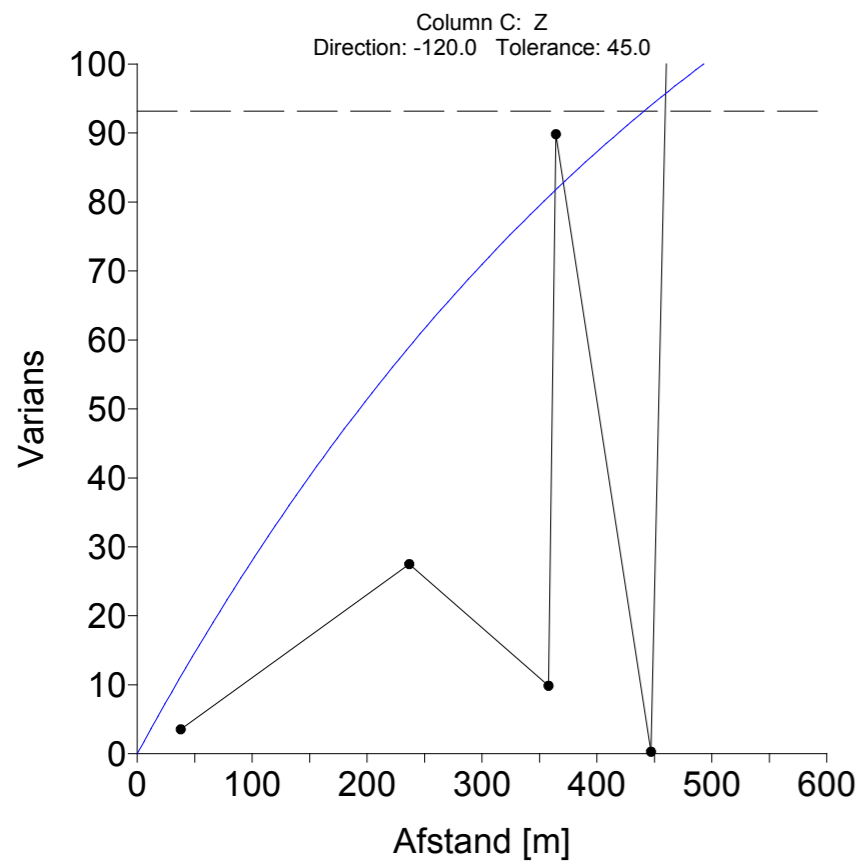


SAND_03_bund



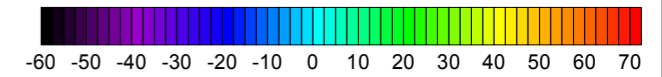
Titel: Hydrostratigrafisk model
Rekvirent: LOOP 6
Vor ref.: Miljøcenter Ribe
Deres ref.: 101691
Filnavn: Hydrostratigrafi.srf
Udført af: THW
Dato: 10/27/09
Ks udført af: MEJO
Konturering: Kriging
Variogram: se figur
Søgeradius: alle data
Cellest.: 50 m

Signaturforklaring:

+ Datapunkter

Interpolation

Kote (m)

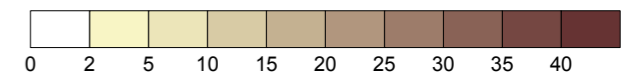


Residualer [m]



Residualerne mellem geologiske tolkningspunkter og den interpolerede flade.

Lag mægtighed [m]



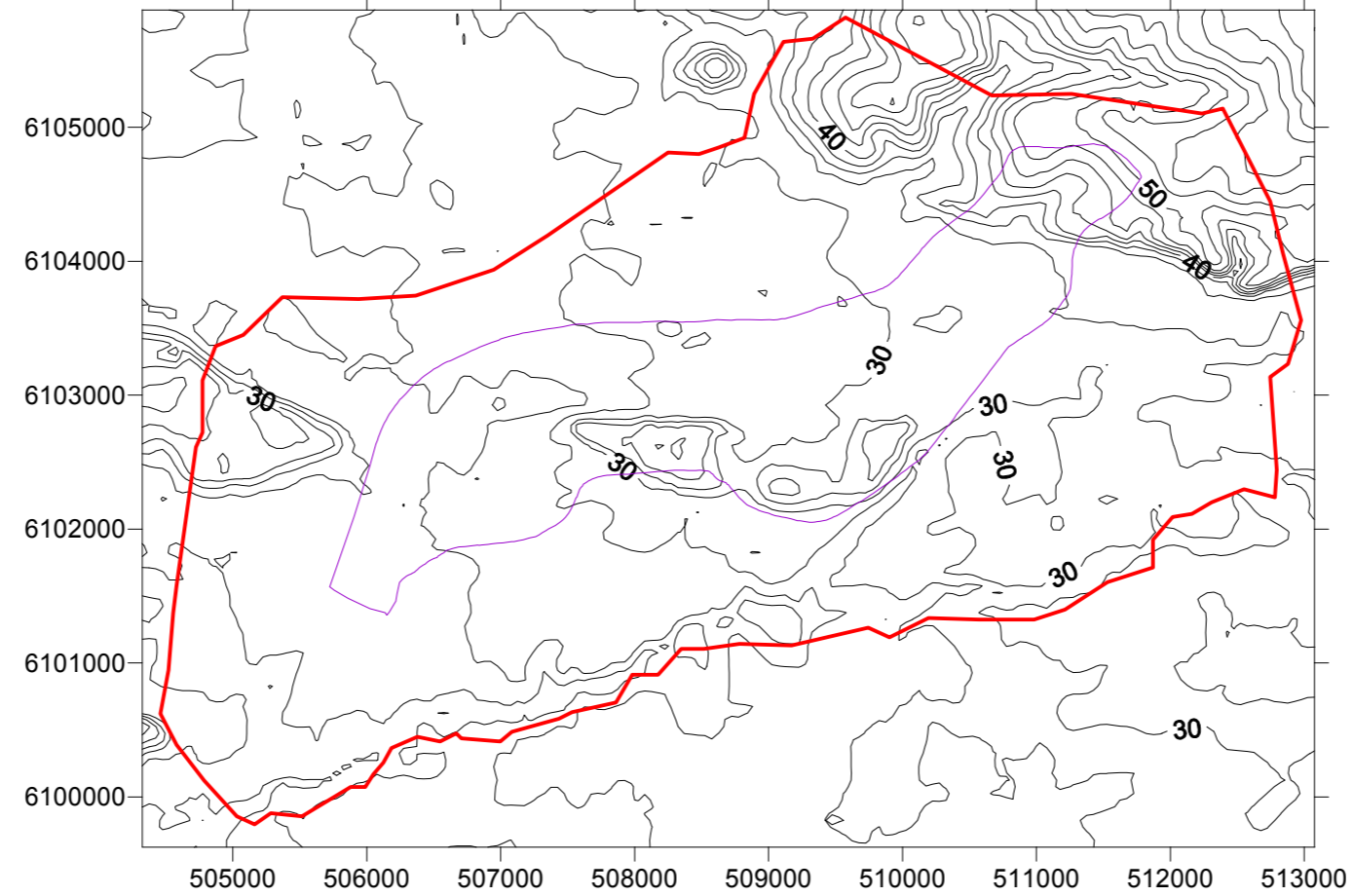
Variogrammer

- — Varians
- Experimentelt variogram
- Modelleret variogram

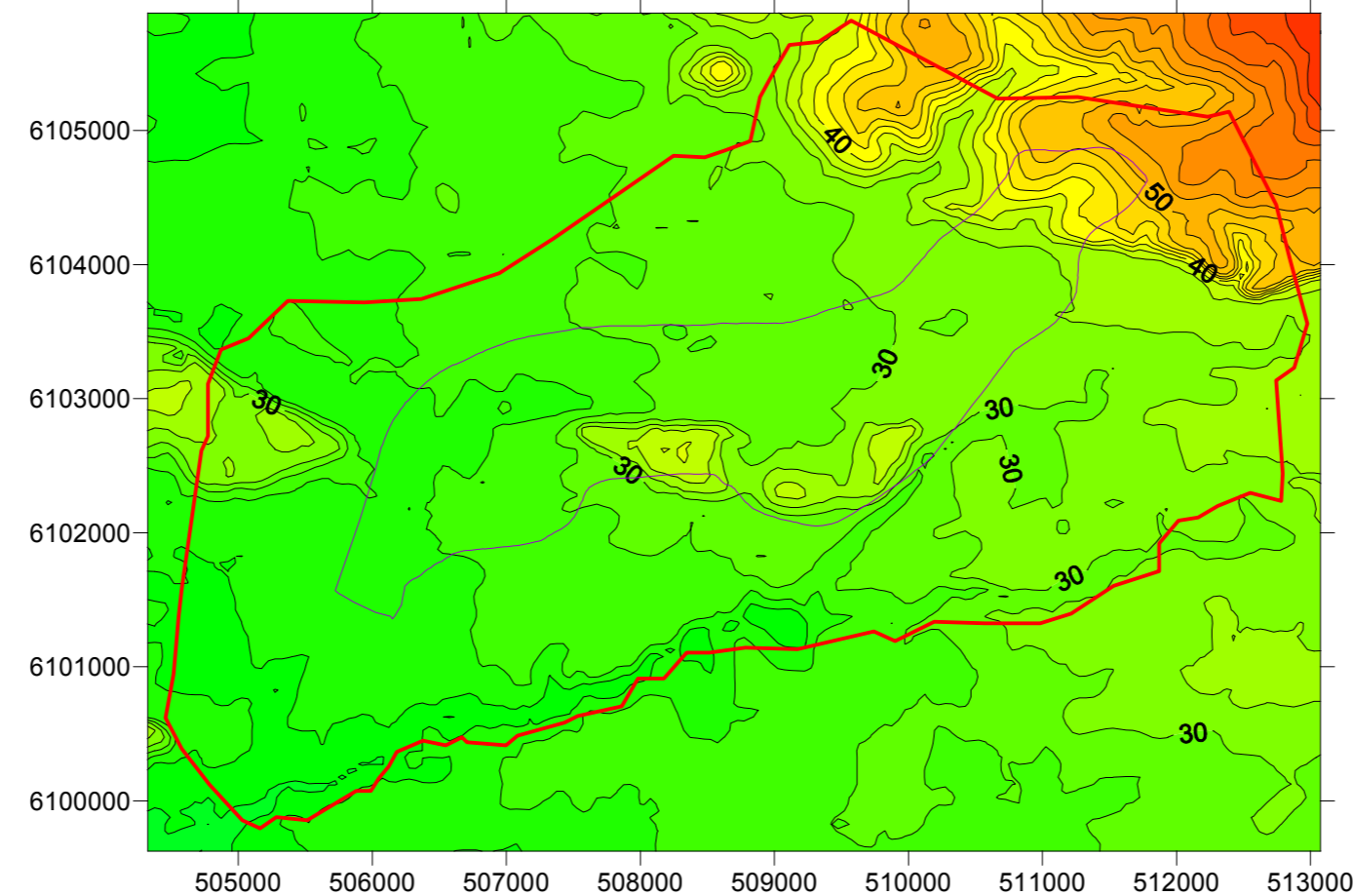
Kortskaal: 1:70.000

Bilag 3: Sand 3 bund

Rå interpolation og residual



Korrigeret flade



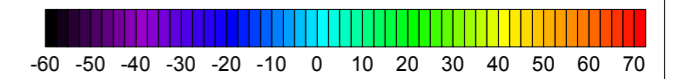
Titel: Hydrostratigrafisk model
 LOOP 6
 Rekvisit: Miljøcenter Ribe
 Vor ref.: 101691
 Deres ref.:
 Filnavn: Hydrostratigrafi.srf
 Udført af: THW
 Dato: 07/07/09
 Ks udført af: MEJO
 Konturering: Kriging
 Variogram: se figur
 Søgeradius: alle data
 Cellest.: 50 m

Signaturforklaring:

+ Datapunkter

Interpolation

Kote (m)



Residualer [m]

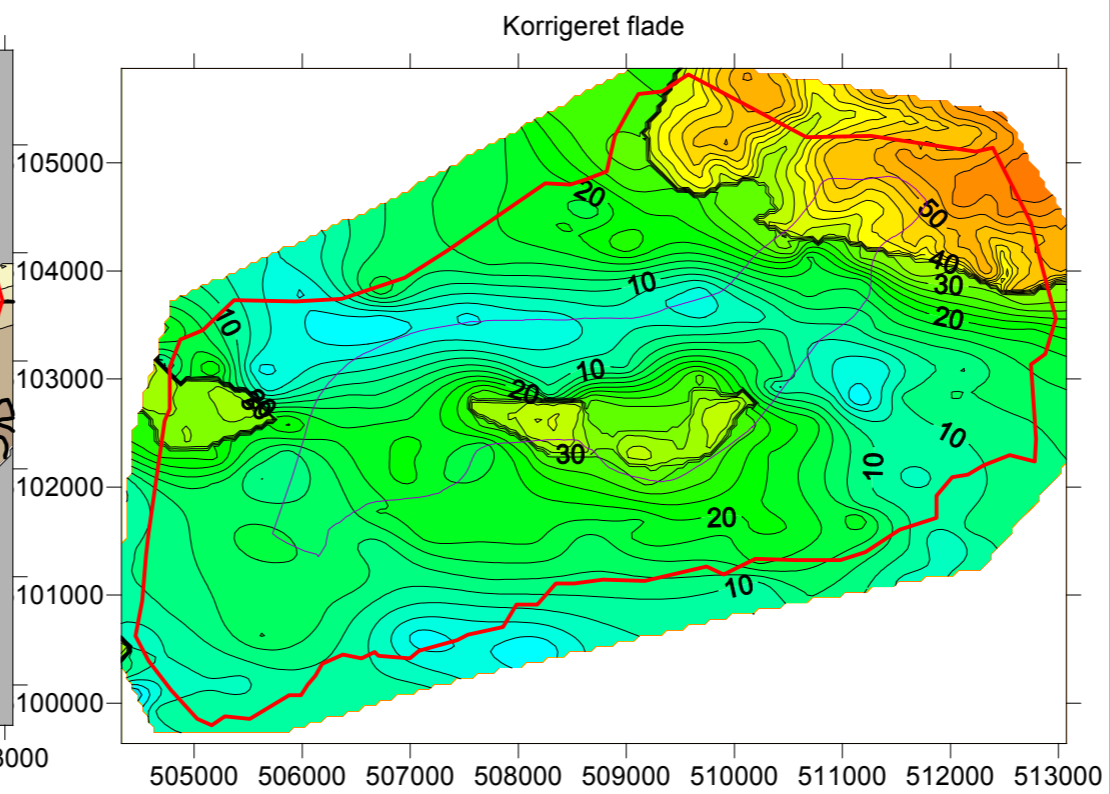
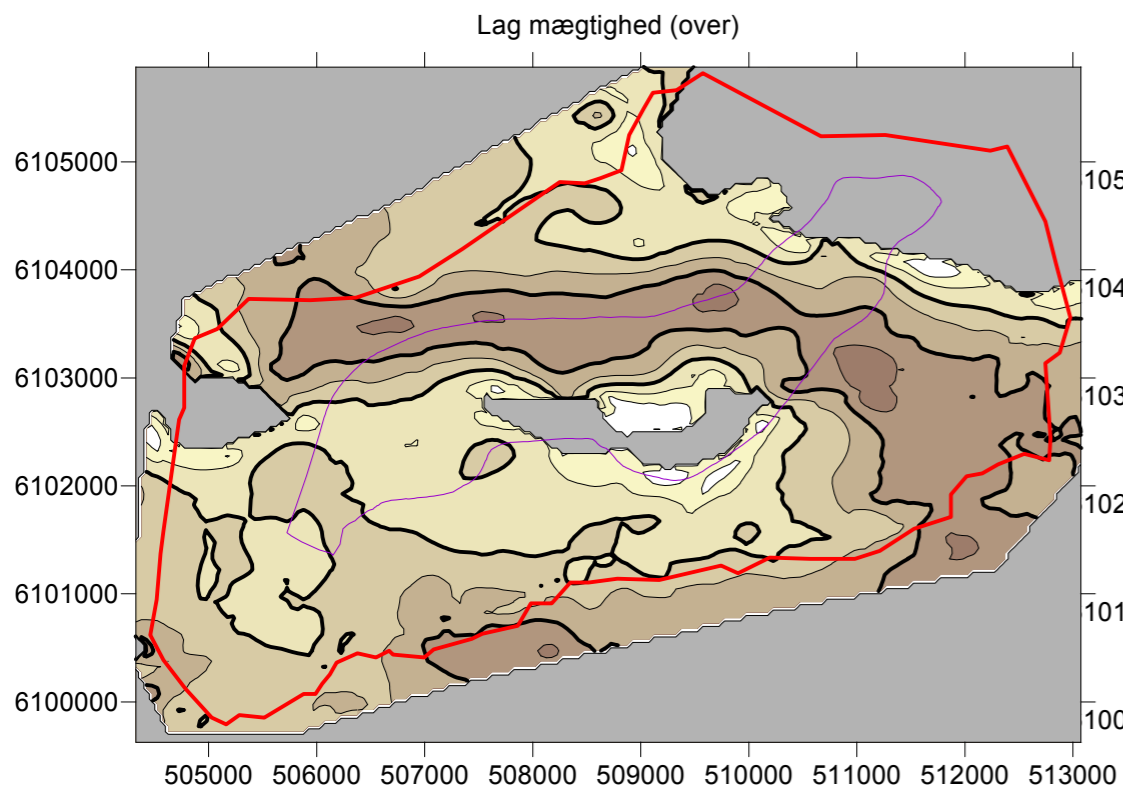
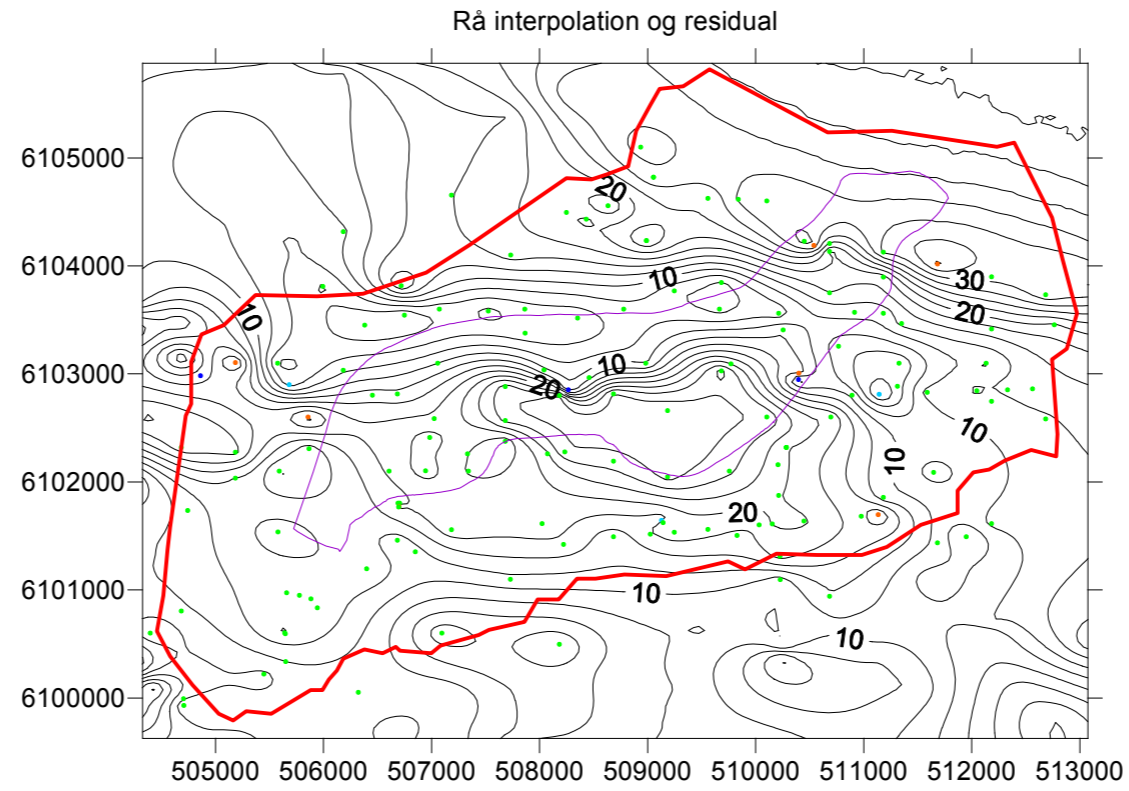
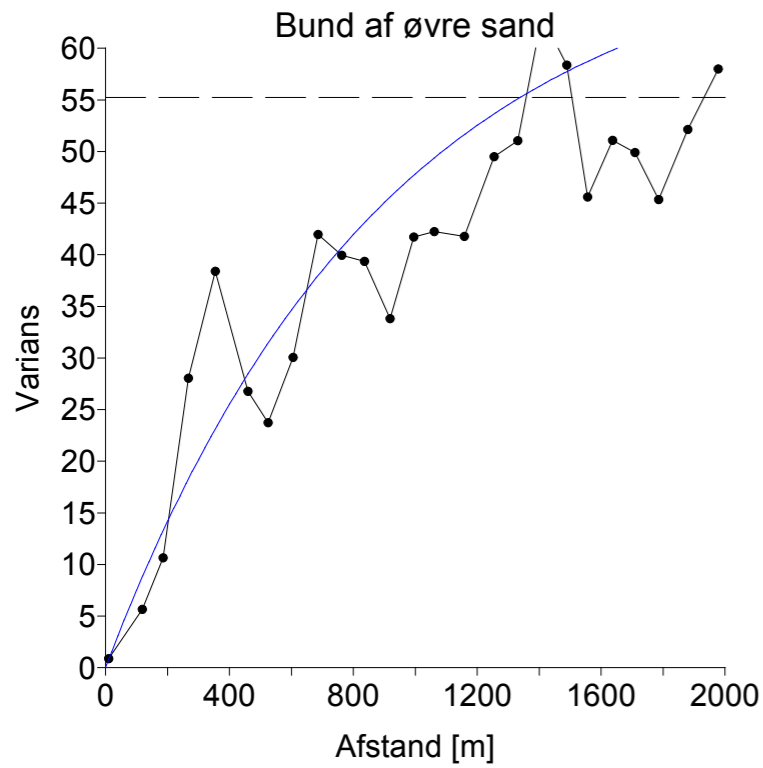


Residualerne mellem geologiske tolkningspunkter og den interpolerede flade.

Kortskala: 1:50.000

Bilag 1: Topografisk overflade

Sand_1_bund



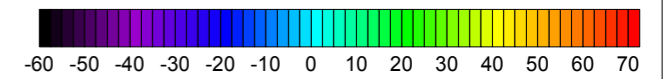
Titel: Hydrostratigrafisk model
 LOOP 6
 Rekvisit: Miljøcenter Ribe
 Vor ref.: 101691
 Deres ref.:
 Filnavn: Hydrostratigrafi.srf
 Udført af: THW
 Dato: 10/27/09
 Ks udført af: MEJO
 Konturering: Kriging
 Variogram: se figur
 Søgeradius: alle data
 Cellest.: 50 m

Signaturforklaring:

++ Datapunkter

Interpolation

Kote (m)

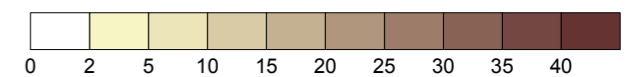


Residualer [m]

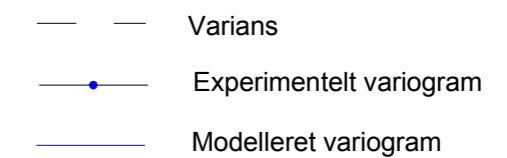


Residualerne mellem geologiske tolkningspunkter og den interpolerede flade.

Lag mægtighed [m]



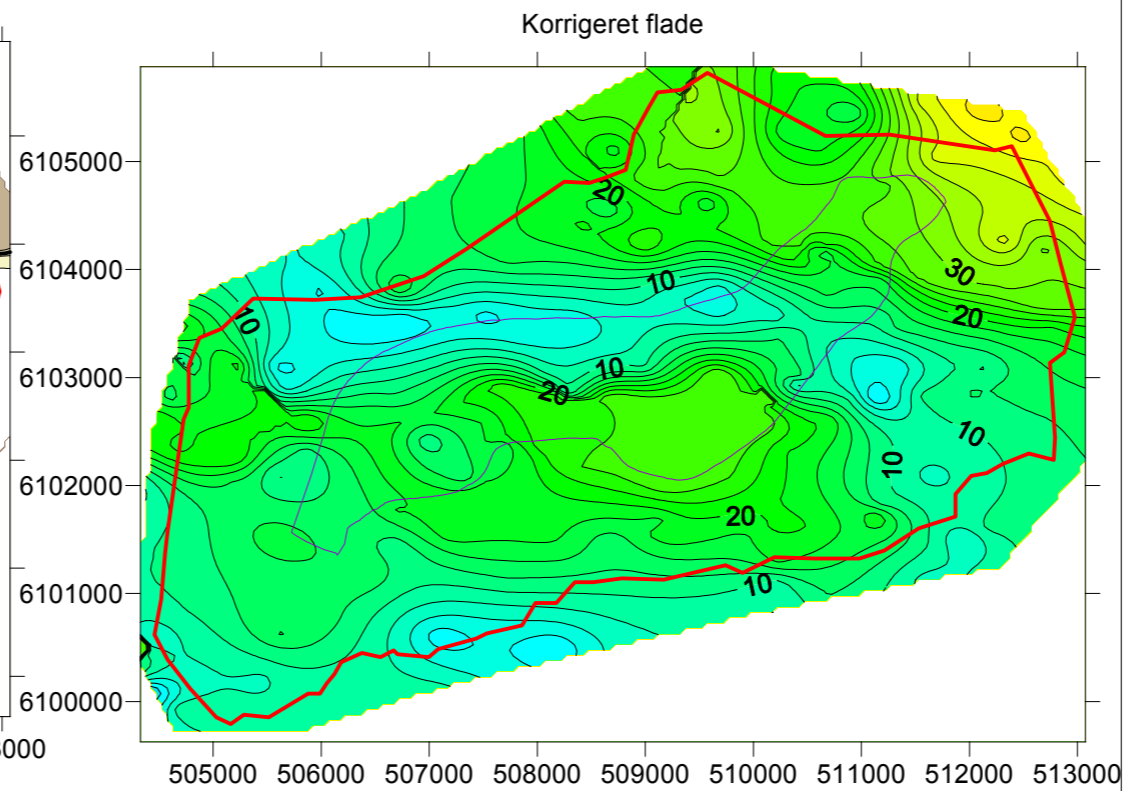
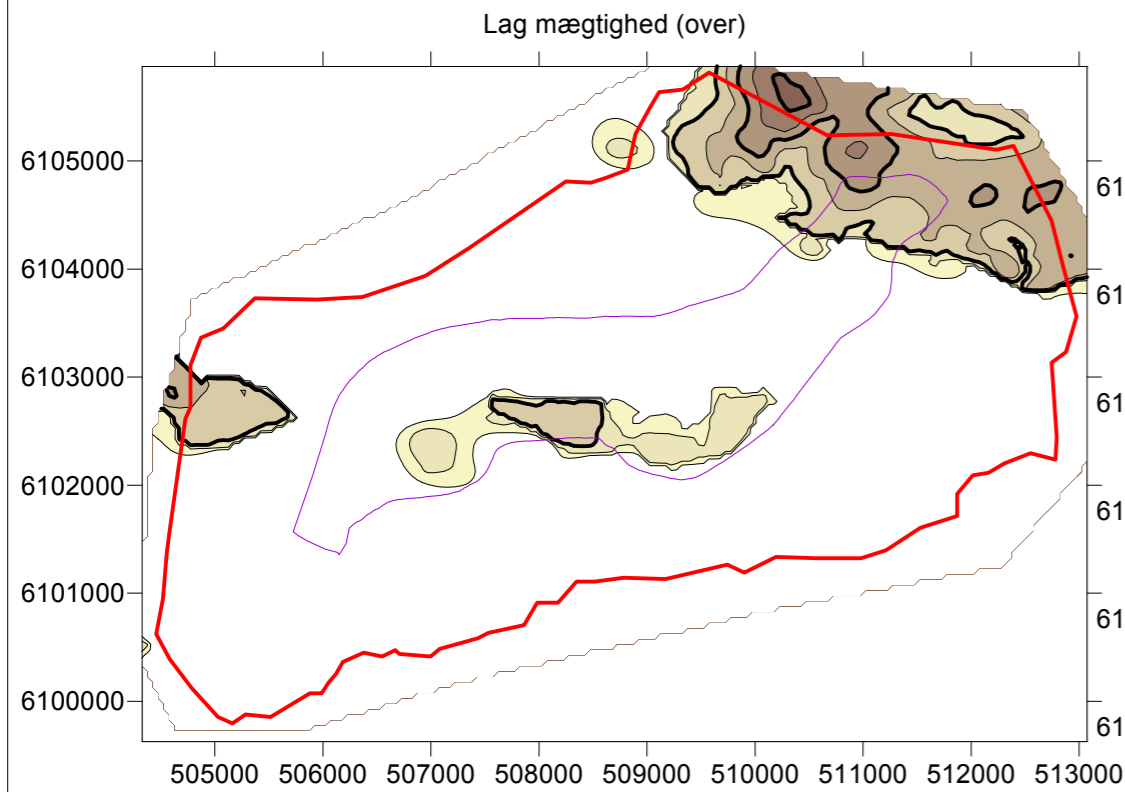
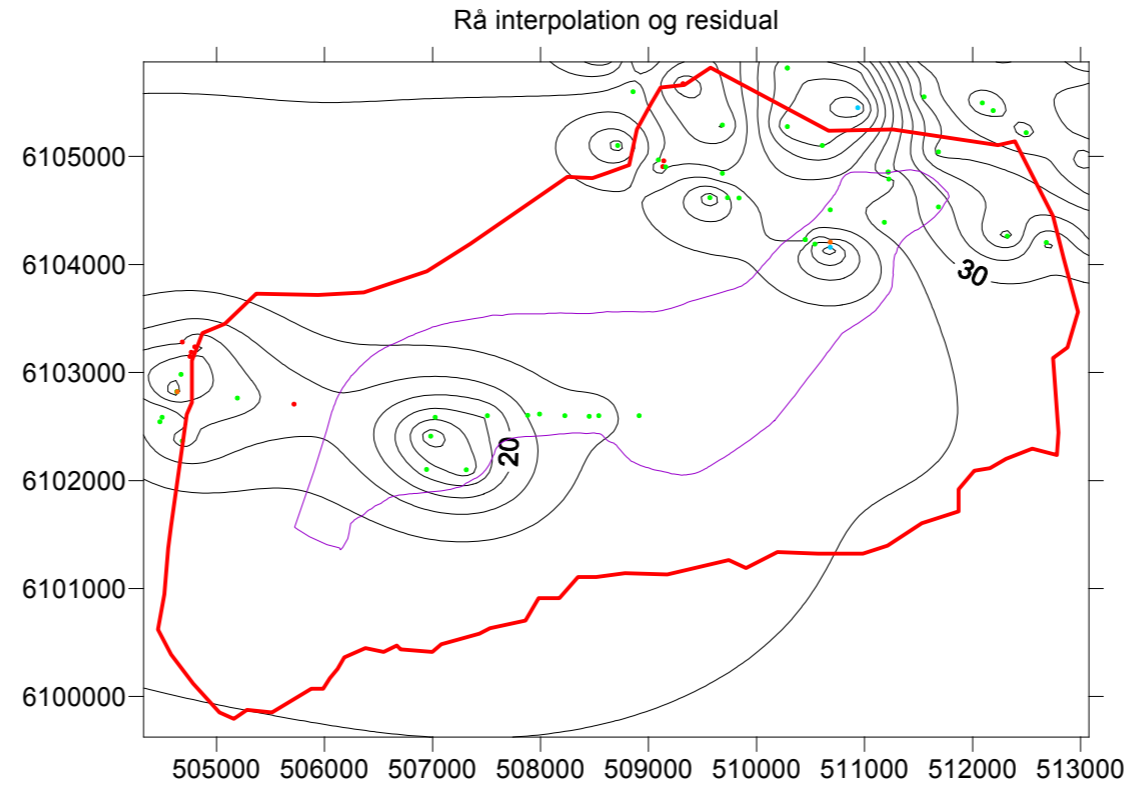
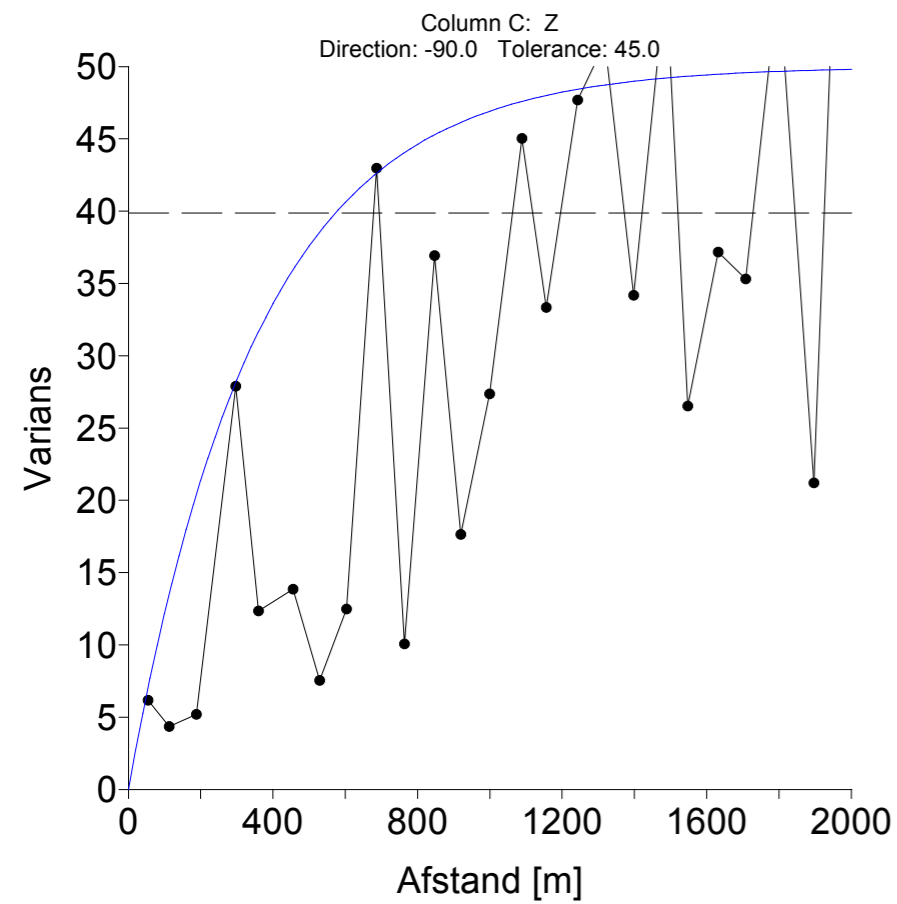
Variogrammer



Kortskala: 1:70.000

Bilag 1: Sand 1 bund

SAND_02_Top



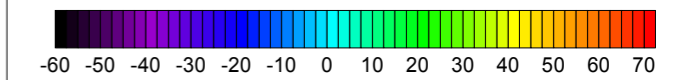
Titel: Hydrostratigrafisk model
 LOOP 6
 Rekvirent: Miljøcenter Ribe
 Vor ref.: 101691
 Deres ref.:
 Filnavn: Hydrostratigrafi.srf
 Udført af: THW
 Dato: 10/27/09
 Ks udført af: MEJO
 Konturering: Kriging
 Variogram: se figur
 Søgeradius: alle data
 Cellest.: 50 m

Signaturforklaring:

+ Datapunkter

Interpolation

Kote (m)



Residualer [m]



Residualerne mellem geologiske tolkningspunkter og den interpolerede flade.

Lag mægtighed [m]



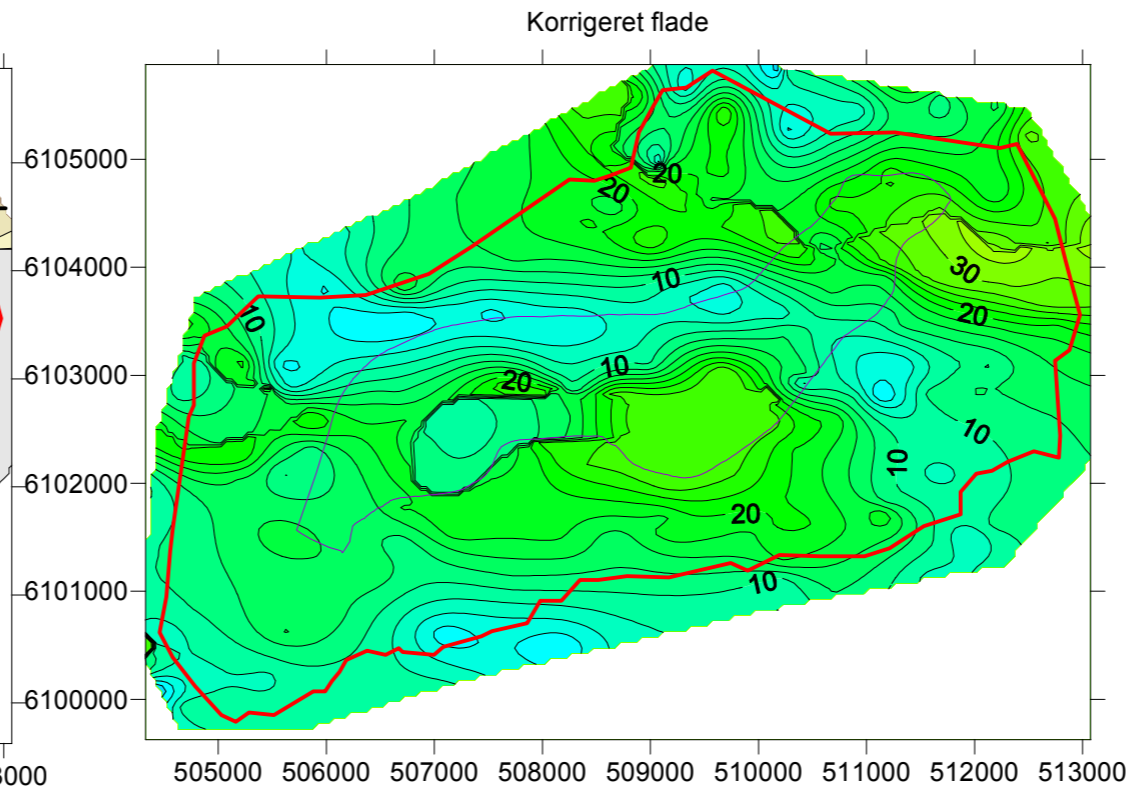
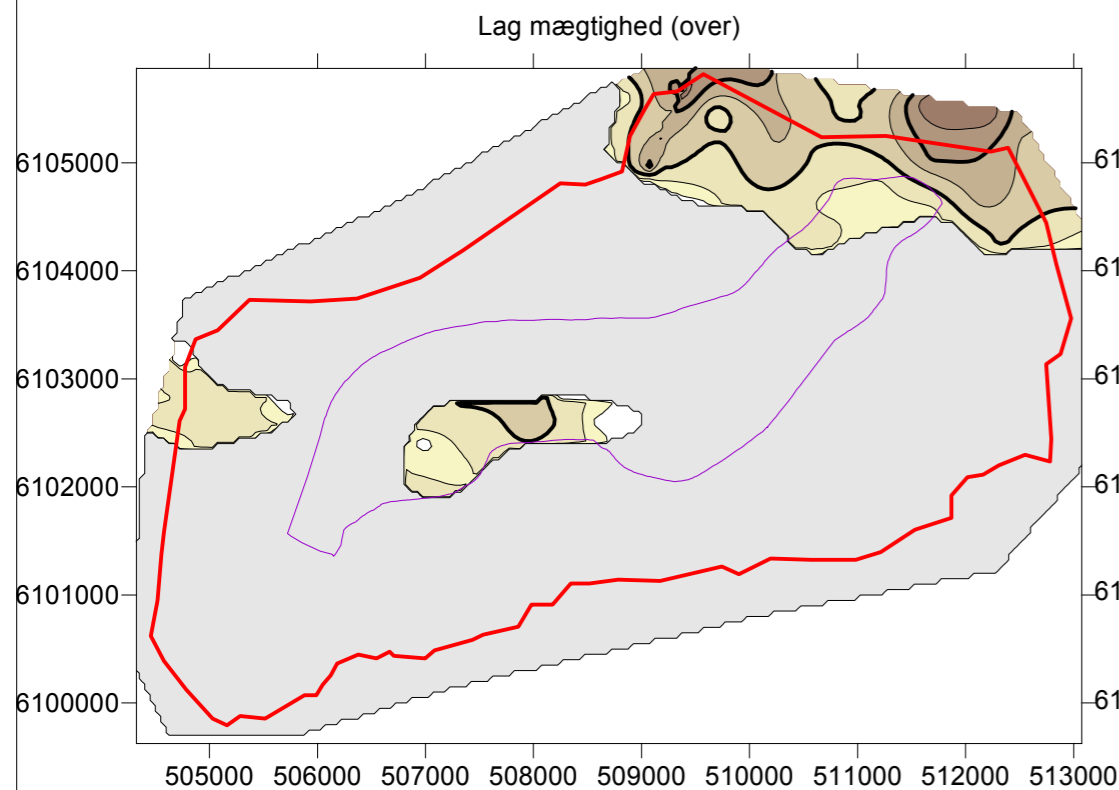
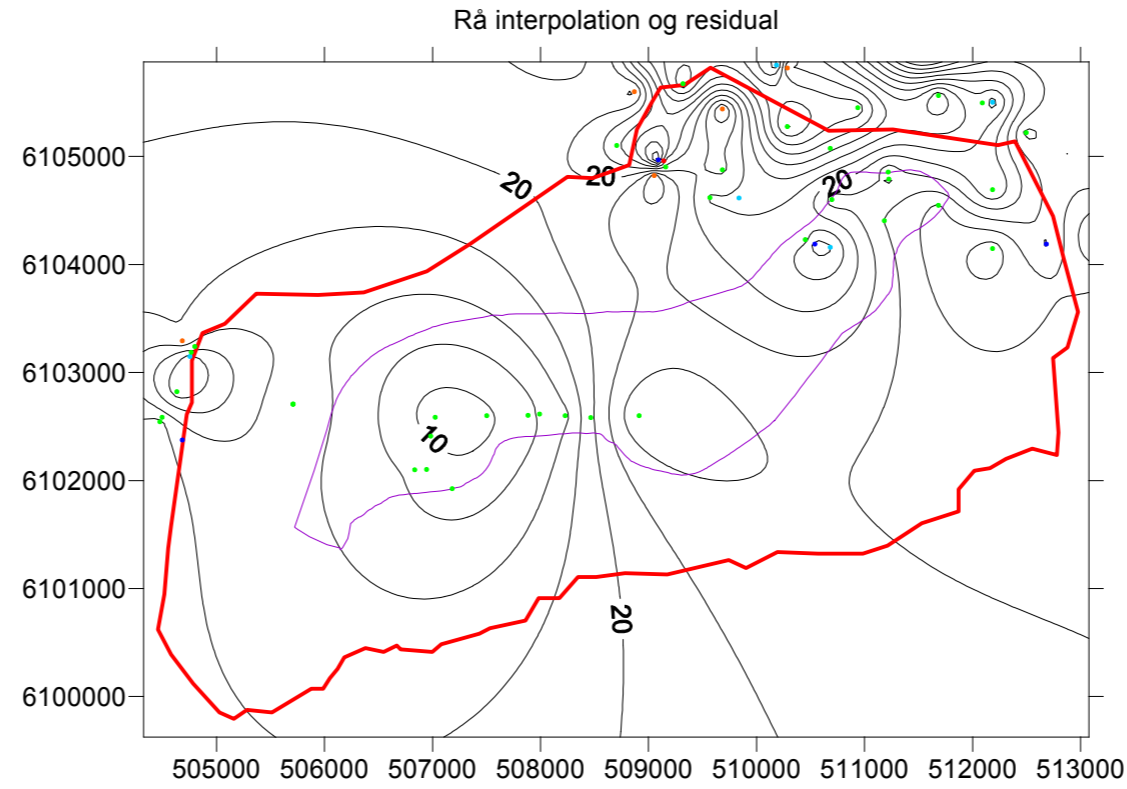
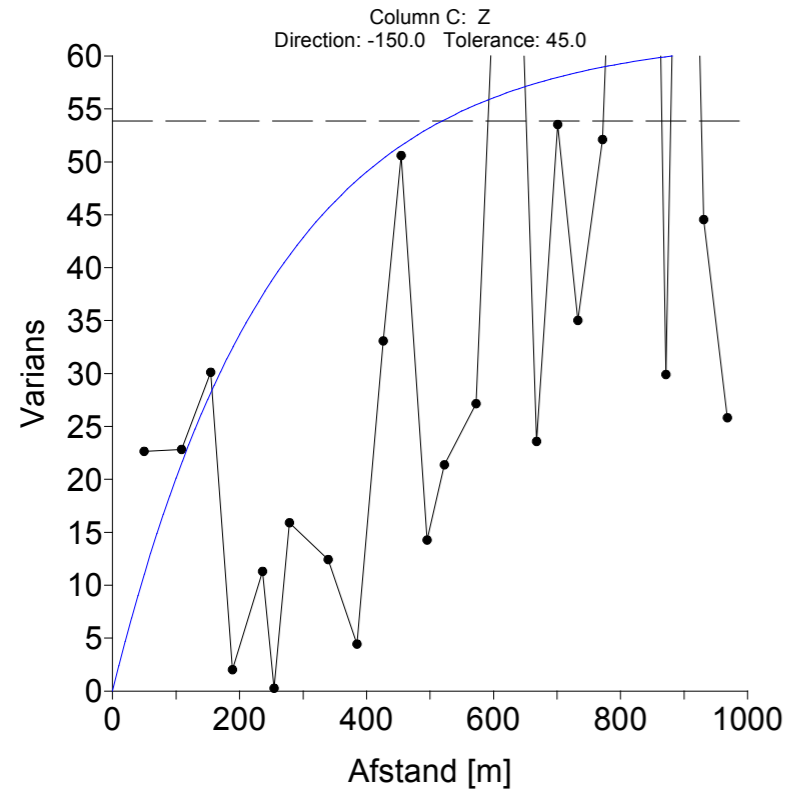
Variogrammer

- — Varians
- Experimentelt variogram
- Modelleret variogram

Kortskala: 1:70.000

Bilag 1: Sand 2 top

SAND_02_Bund



Titel: Hydrostratigrafisk model
 LOOP 6
Rekvirent: Miljøcenter Ribe
 Vor ref.: 101691
Deres ref.:
Filnavn: Hydrostratigrafi.srf
Udført af: THW
Dato: 10/27/09
Ks udført af: MEJO

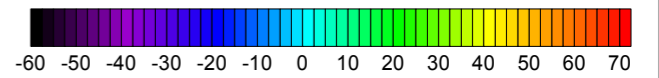
Konturering: Kriging
Variogram: se figur
Søgeradius: alle data
Cellest.: 50 m

Signaturforklaring:

+ Datapunkter

Interpolation

Kote (m)



Residualer [m]



Residualerne mellem geologiske tolkningspunkter og den interpolerede flade.

Lag mægtighed [m]



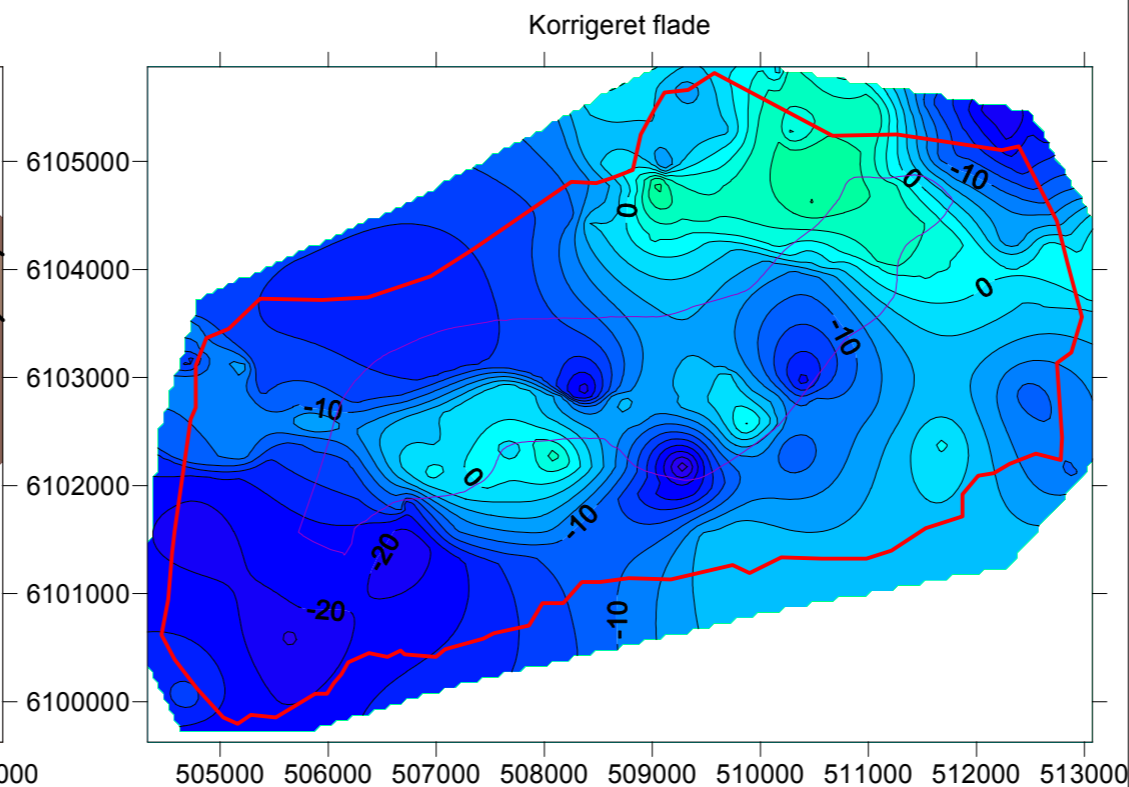
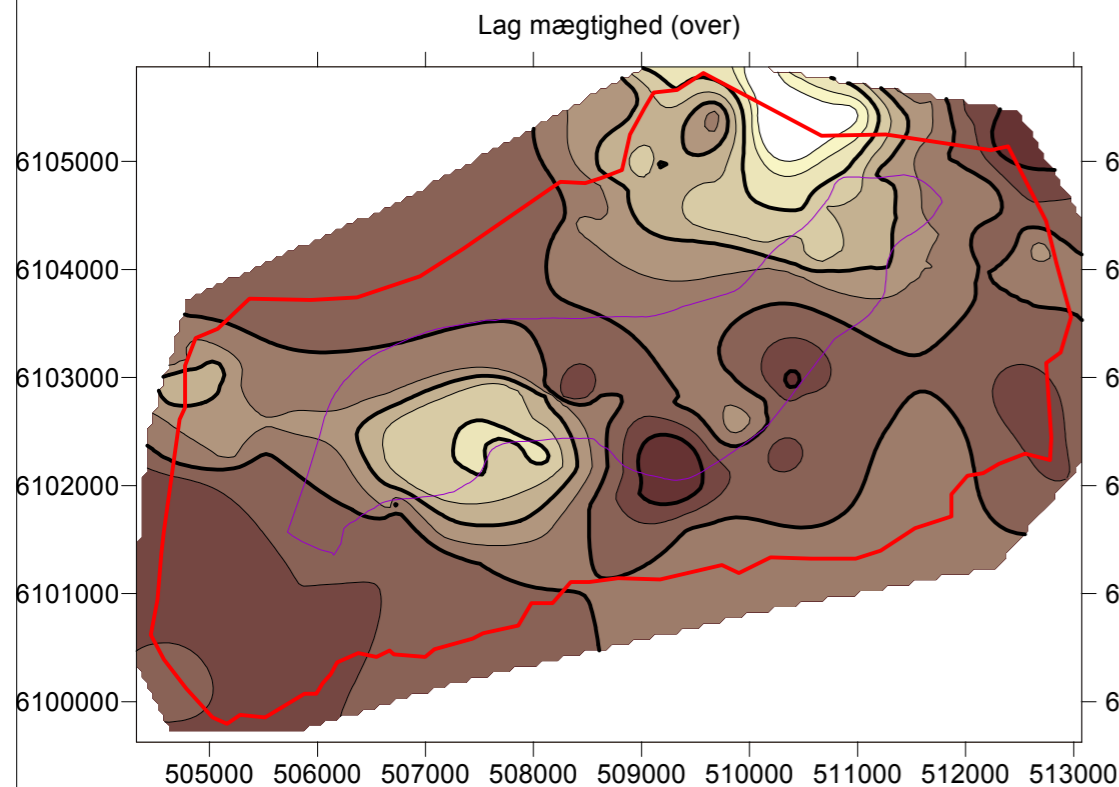
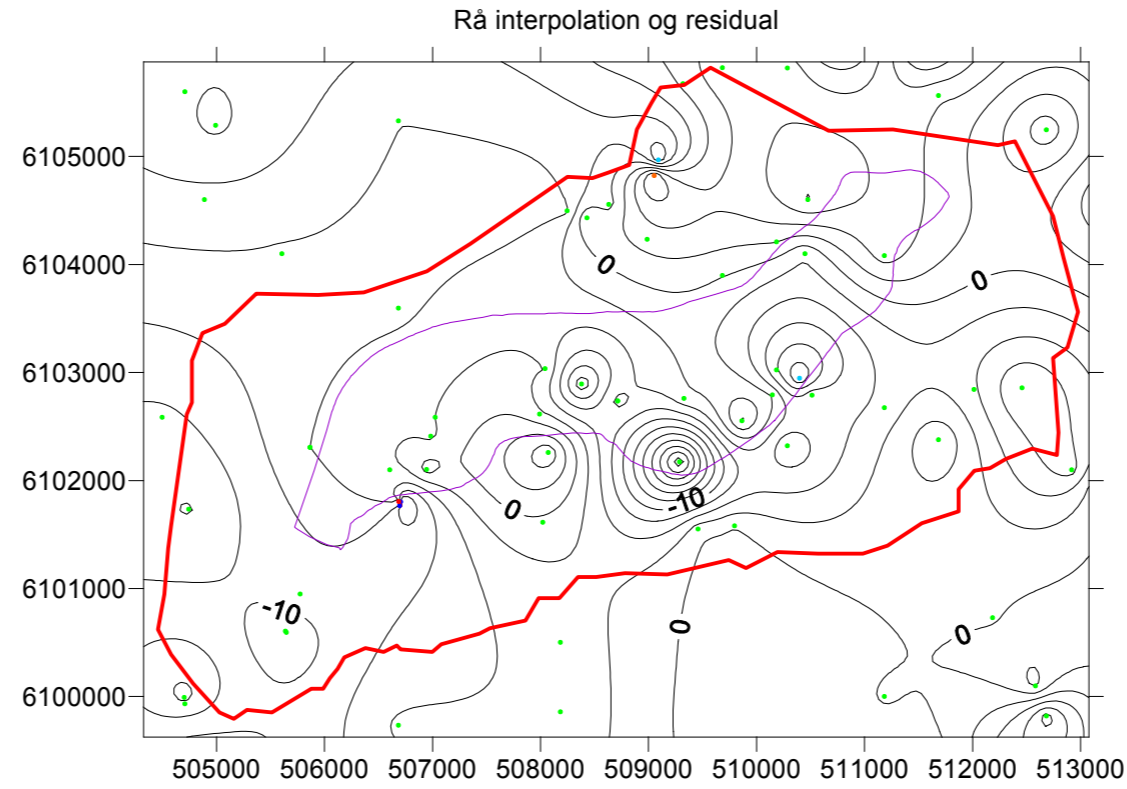
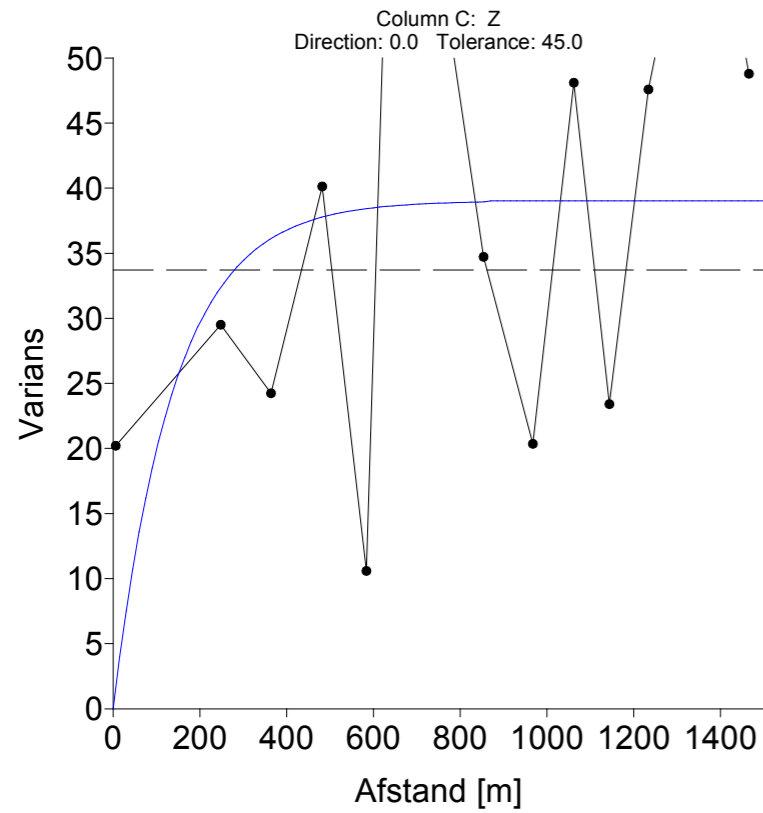
Variogrammer

- — Varians
- Experimentelt variogram
- Modelleret variogram

Kortskala: 1:70.000

Bilag 1: Sand 2 bund

SAND_03_TOP



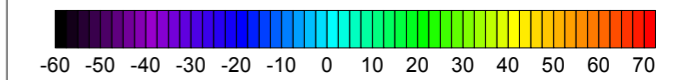
Titel: Hydrostratigrafisk model
 LOOP 6
 Rekvirent: Miljøcenter Ribe
 Vor ref.: 101691
 Deres ref.:
 Filnavn: Hydrostratigrafi.srf
 Udført af: THW
 Dato: 10/27/09
 Ks udført af: MEJO
 Konturering: Kriging
 Variogram: se figur
 Søgeradius: alle data
 Cellest.: 50 m

Signaturforklaring:

+ Datapunkter

Interpolation

Kote (m)

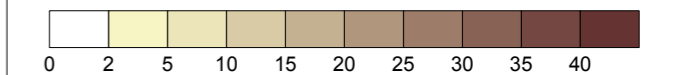


Residualer [m]



Residualerne mellem geologiske tolkningspunkter og den interpolerede flade.

Lag mægtighed [m]



Variogrammer

- — Varians
- Experimentelt variogram
- Modelleret variogram

Kortskala: 1:70.000

Bilag 1: Sand 3 top